

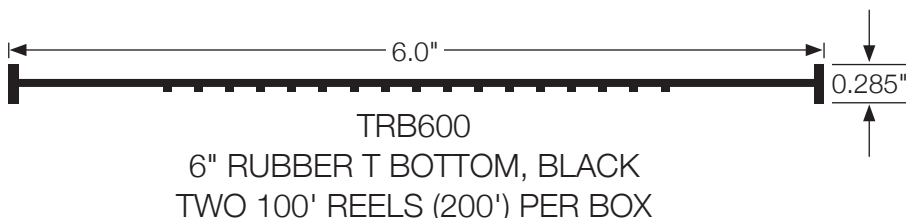
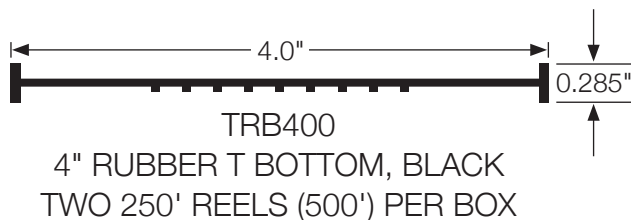
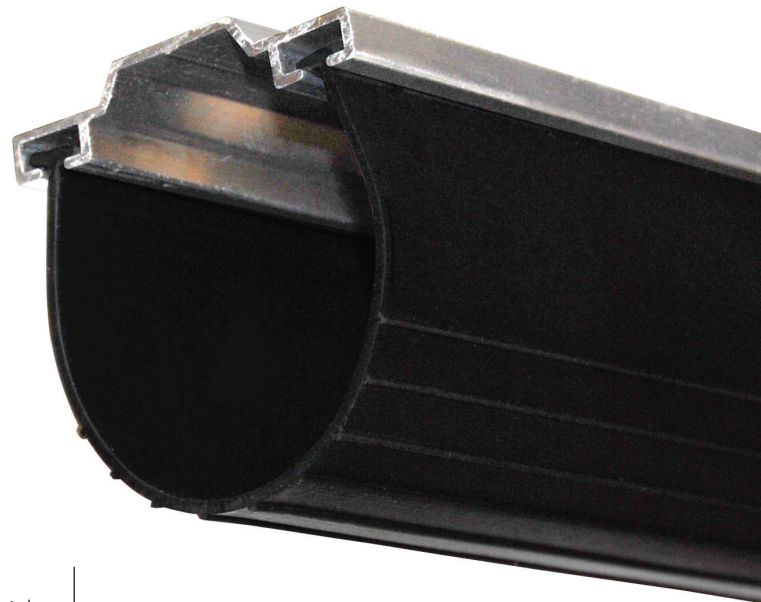


T Bottom Garage Door Seals

New **RUBBER** garage door **SEAL** that retains its shape in the most extreme of temperatures.

Made from **AUTOMOTIVE GRADE** material and is simply the **BEST** garage door bottom available in the industry

- Remains flexible and holds its integrity from - 60°F to 275°F
- Will not crack or split like PVC
- Ribbed to channel water away from door bottom
- Seal coated to add extra years of service and add to ease of installation
- Black to help hide dust and dirt



TRY IT ONCE AND NOTHING ELSE WILL COMPARE